



2019

C

“ ”
2019 1 1 2019
12 31

2019

GB/T 360000-2015 GRI G4.0
GB/T36002-2015

PDF http
//www.sse.com.cn

..... 1

..... 1

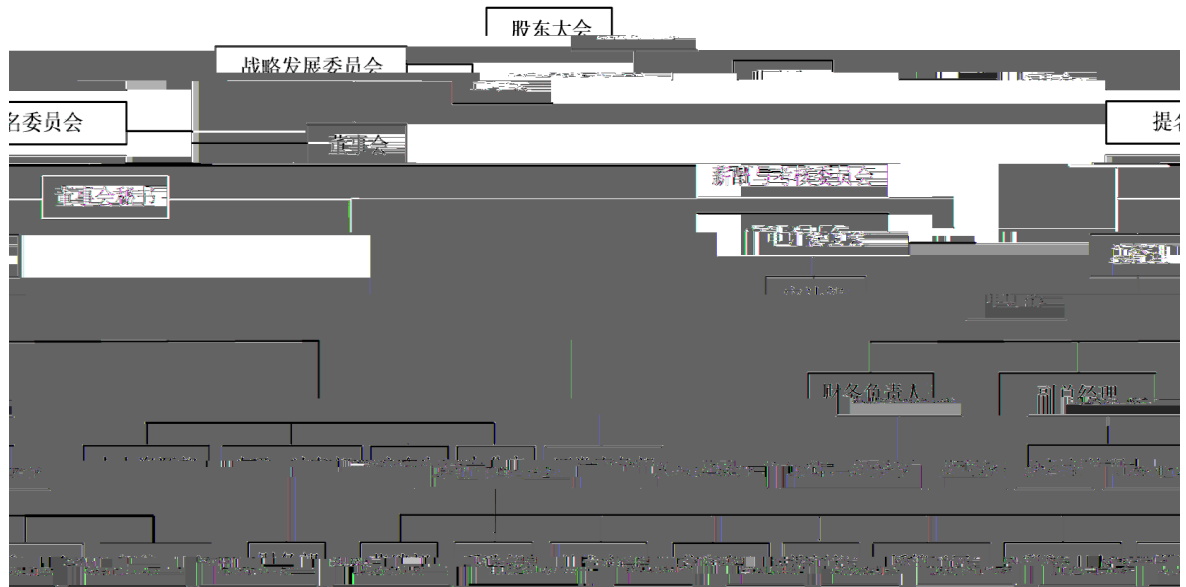
|||||..... 2

2004 11 2016

2019 7 26

603687

CS B $\frac{3}{4}$



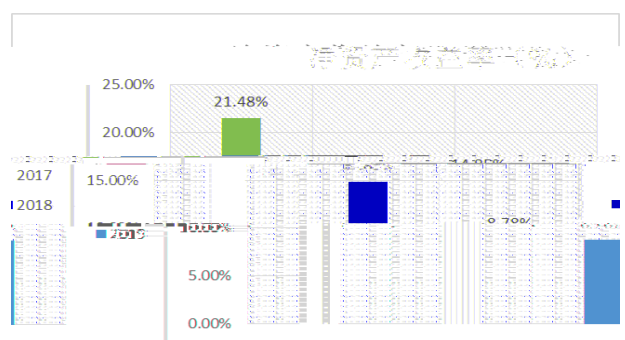
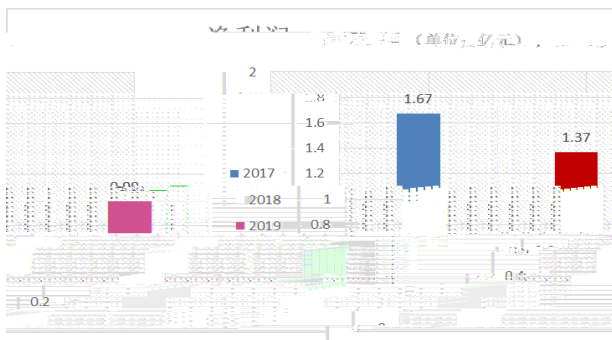
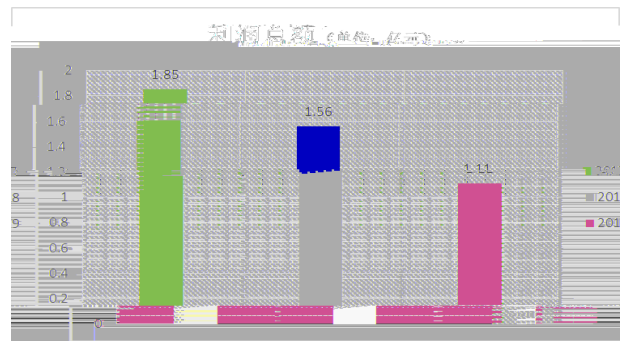
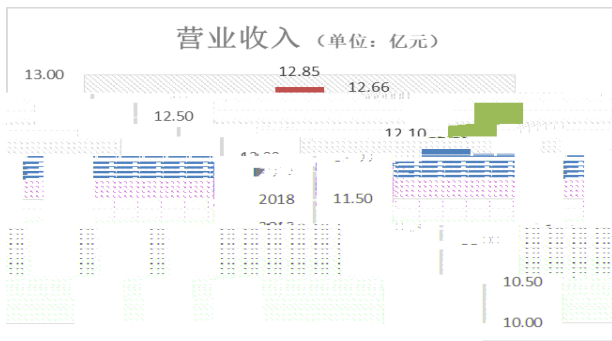
“ ”

1

2					
2019				12.66	
	1.48%	9,989.04		27.09%	
1.11		28.66%	8.78%		6.07

3

" "



2019

AAA

2



19

3

A

	2019	2019	12	31
410,830,732	10	0.26		0
		10,681,599.03		

6

2

ISO14001

OHSAS18001



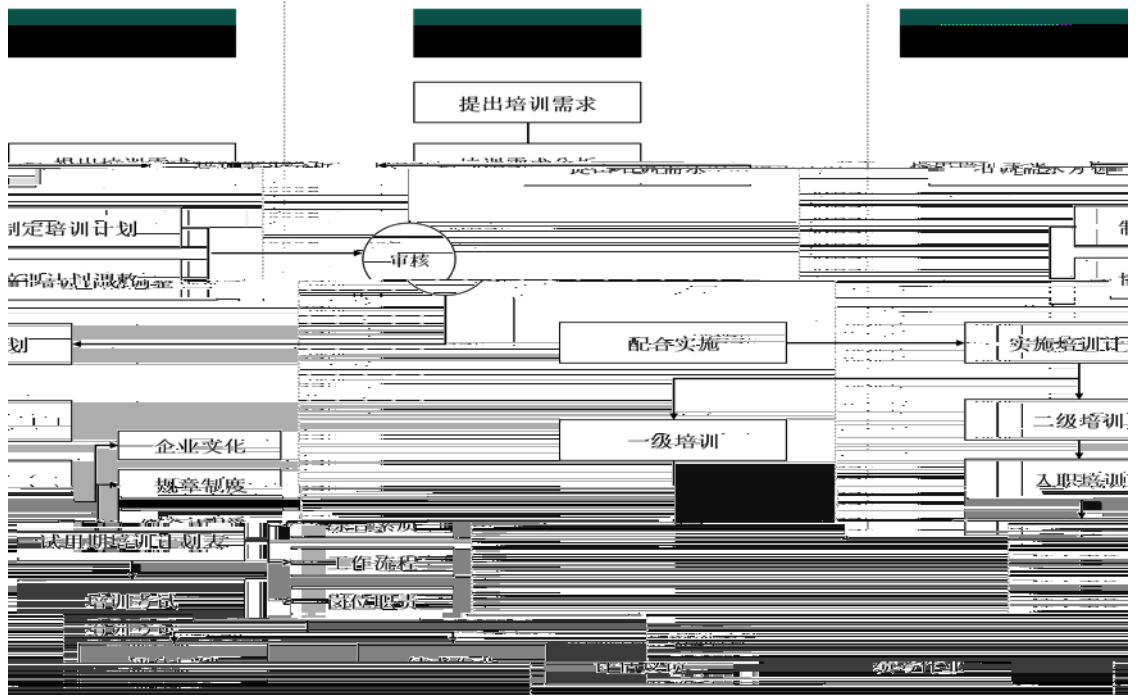
3

"

"

	20
	/
	1
	2

4



3%

DVD

2019



	2 /	

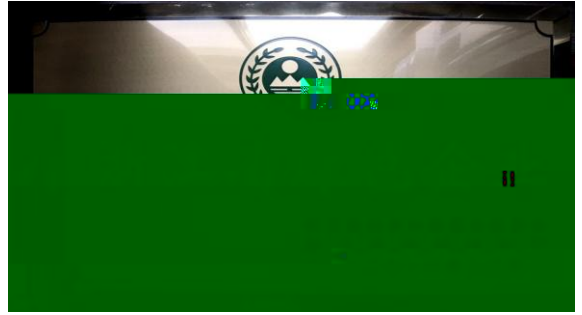
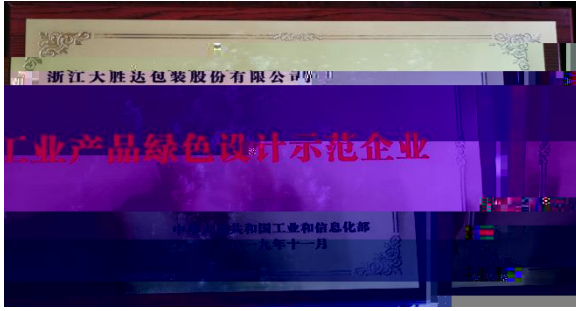
3042tCO₂e

13.01tCO₂/ m²

"

"

"



“ ”

35

100

2020

“ ”